

# Ceramic Packages for Sensor INERTIAL SENSOR PACKAGE

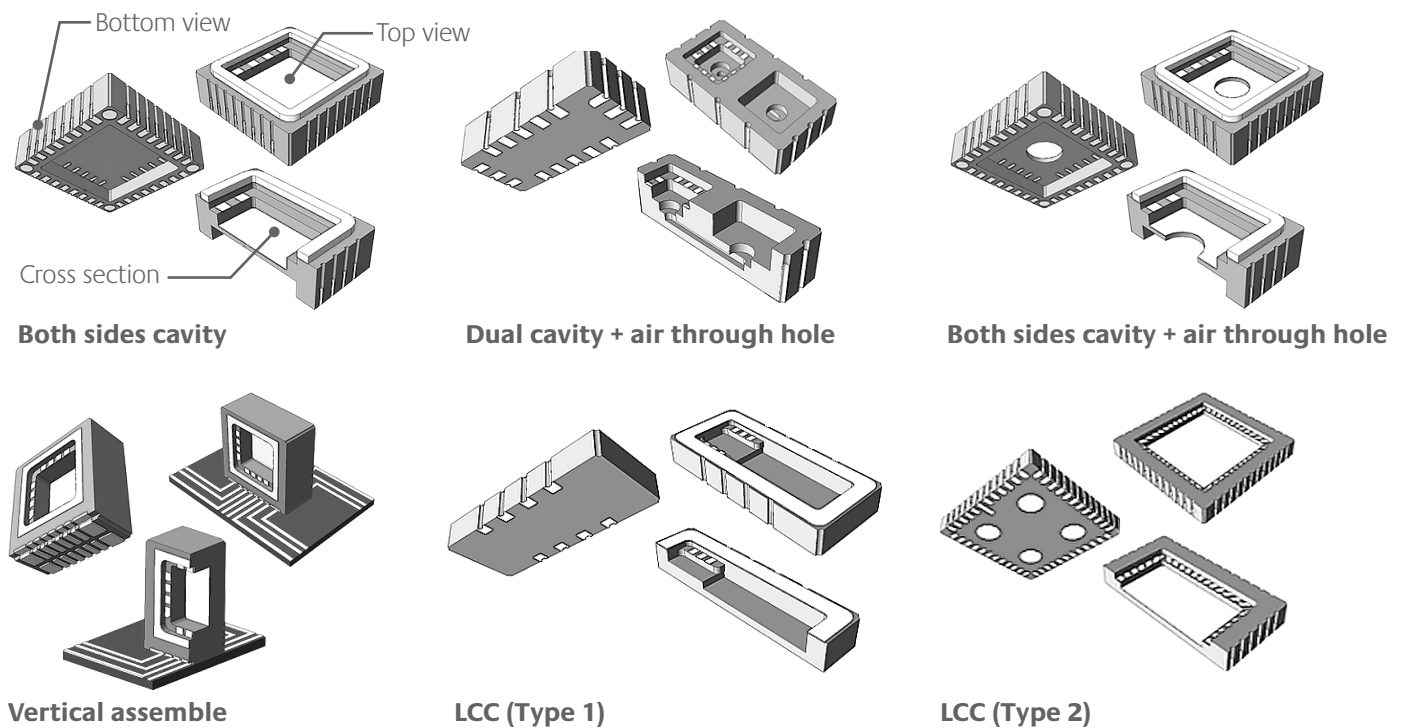
## APPLICATIONS

- ▶ Electronic Stability Control (ESC)
- ▶ Roll over sensor
- ▶ Sensor for ADAS (Advanced Driver Assistance Systems)

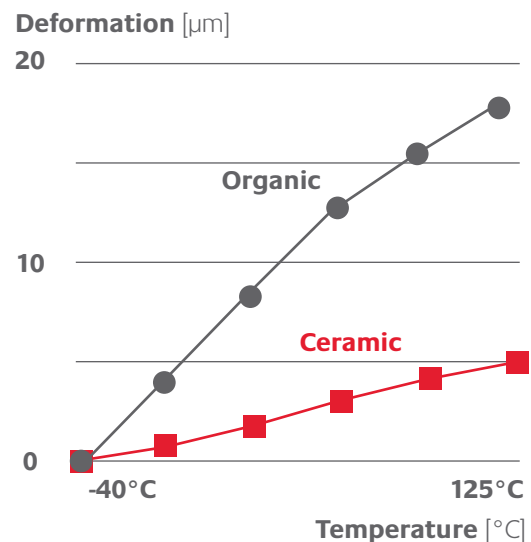
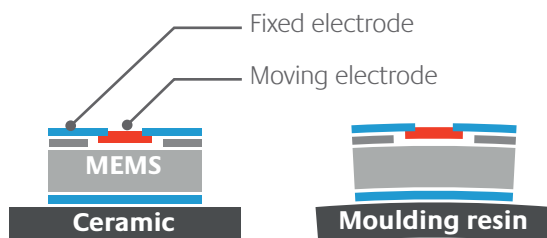
## FEATURES

- ▶ Small size: 5 mm - 10 mm
- ▶ Solder fillet suitable for AOI (Automated Optical Inspection)
- ▶ Hermetic: seam weld, AuSn, solder
- ▶ High rigidity: high accuracy sensor

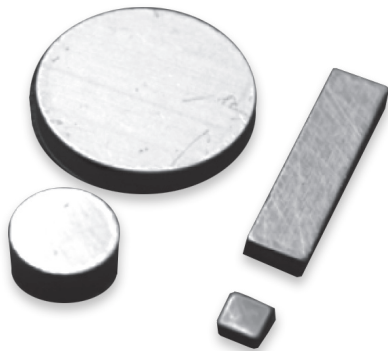
## Various package structures



## Product trend



# Ceramic Packages for Sensor PRESSURE SENSOR PACKAGE



Pressure sensor package

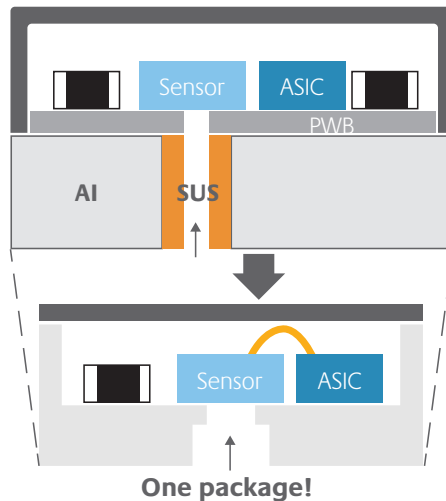
## APPLICATIONS

- ▶ Exhaust gas sensor
- ▶ Fuel sensor
- ▶ Barometer
- ▶ Wearables

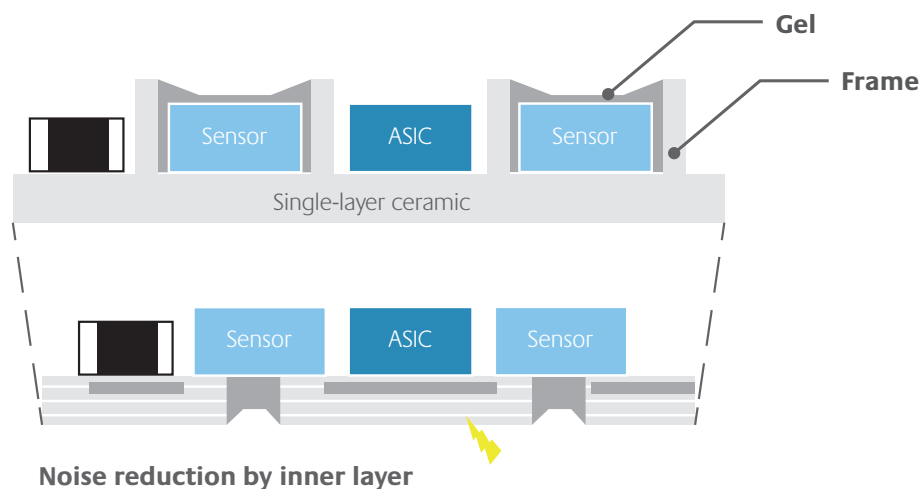
## FEATURES

- ▶ Reduced assembly costs by one package
- ▶ Size reduction
- ▶ Reduction of noise
- ▶ Harsh environment resistance

### Oil pressure sensor



### Differential pressure sensor



Copyright © 2018 KYOCERA Fineceramics GmbH, September 2018. We reserve the right to make changes without prior notice.