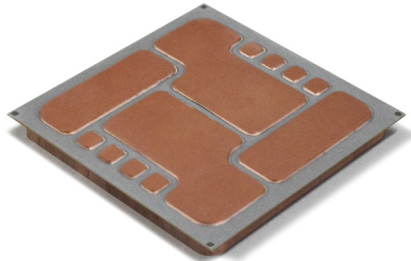


# Active Metal Bonding Substrates

## Leading Edge Brazing Technologies



Under development

### FEATURES

Thin copper: 0.6 mmt

▶ High reliability

Thick copper: 4 mmt

▶ High thermal dissipation

Fine pattern gap

▶ Miniaturization

## APPLICATIONS

▶ Automotive

▶ Windmill

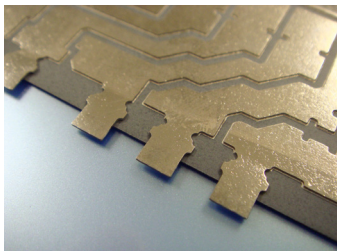
▶ Railway

▶ Satellite

▶ Aviation

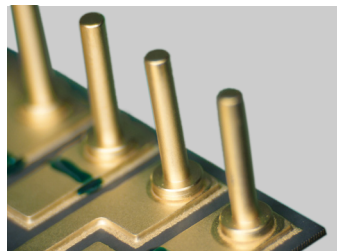
▶ Oil-gas drill

## CONNECTOR TECHNOLOGIES



Lead terminal

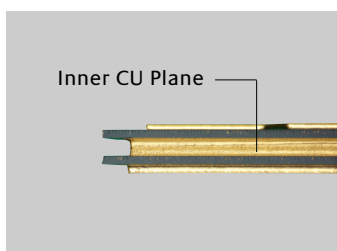
Lead type



Pin terminal

Copper pin type

## MULTILAYER STRUCTURE



▶ Multilayer AMB structure

▶ Low inductance

▶ 3 dimensional routing